

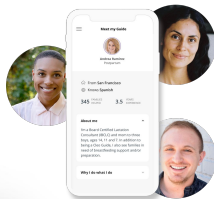
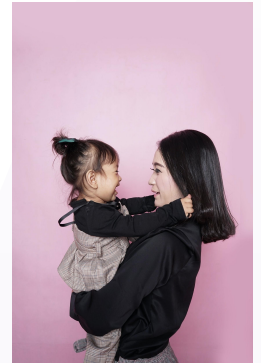
cleo

Welcome to Cleo, your new parenting support system.



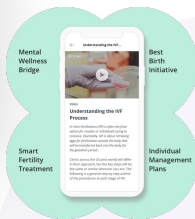
Starting or growing a family is a non-stop adventure. Cleo is available to better support you through this journey.

Cleo Baby supports you from the time you are expecting through baby's first birthday, while **Cleo Kids** provides support to parents with kid ages 1 to 12, with the following services:



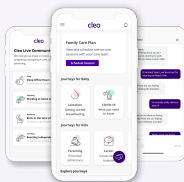
Expert Guidance

Cleo Guides and certified practitioners, are matched to your needs
Practitioner developed and curated content



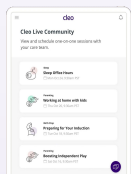
Evidence-Based Programs

Early clinical detection
High-touch and monitoring in clinical care



Personalized App

In-app messaging with dedicated Cleo Guide
Virtual sessions, workshops, targeted tips, and community resources



Cleo Community

Interaction with Cleo's network of members and experts through virtual events and live Q&As

Ready to get started?

- Visit hicleo.com/activate and download the Cleo mobile app.
- Activate with your work email or company code "**lcg2021**"

cleo

It takes a village. Consider us yours.



Step 1. Sign Up for Cleo

Visit hicleo.com/activate

Step 2. Meet Your Cleo Guide

When you enroll in Cleo you are assigned a Cleo Guide (a real person!) who will be there to support you along the way.

Step 3. Receive Personalized Support

Cleo support is delivered through the Cleo mobile app, personalized content, a specialist network, online workshops and more!

A preview of Cleo parenting topics:



Cleo Baby

- Birth Preparation
- Newborn Care
- Infant Feeding
- Newborn Sleep
- Introducing Solids
- Mental Wellness
- Return to Work
- And more!



Cleo Kids

- Positive Discipline
- Childcare 101
- Creative Learning
- Building Healthy Habits
- Parental Confidence
- Pediatric Behavioral Health
- Adolescent transition
- And more!

Ready to get started?

- Visit hicleo.com/activate and download the Cleo mobile app.
- Activate with your work email or company code "**lcg2021**"